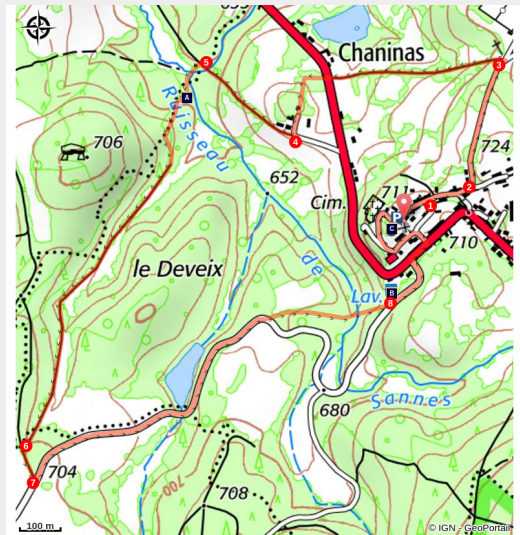


The Painters' Walk

Sud Creuse – Aubusson – lac de Vassivière – La Villeneuve



La Villeneuve - Vue du bourg (AD 23)



The Painters' Walk takes you in the footsteps of the Impressionists who stayed at La Villeneuve, in a setting that served as their inspiration.

Villeneuve owes much to the history of the fur trade, which made the fortune of the area in the 19th century.

The village became a popular holiday resort, especially for painters staying with wealthy local families.

Useful information

Practice : Pedestrian

Duration : 1 h 30

Length : 4.4 km

Trek ascent : 112 m

Difficulty : Easy

Type : Loop

Themes : History

Accessibility : VTT

Trek

Departure : Church, La Villeneuve

Arrival : Church, La Villeneuve

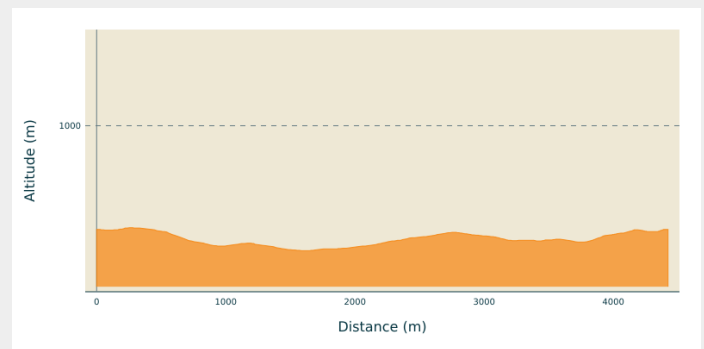
Markings : — Yellow markers

Cities : 1. La Villeneuve

2. Saint-Bard

3. Saint-Oradoux-près-Crocq

Altimetric profile



Min elevation 653 m Max elevation 717 m

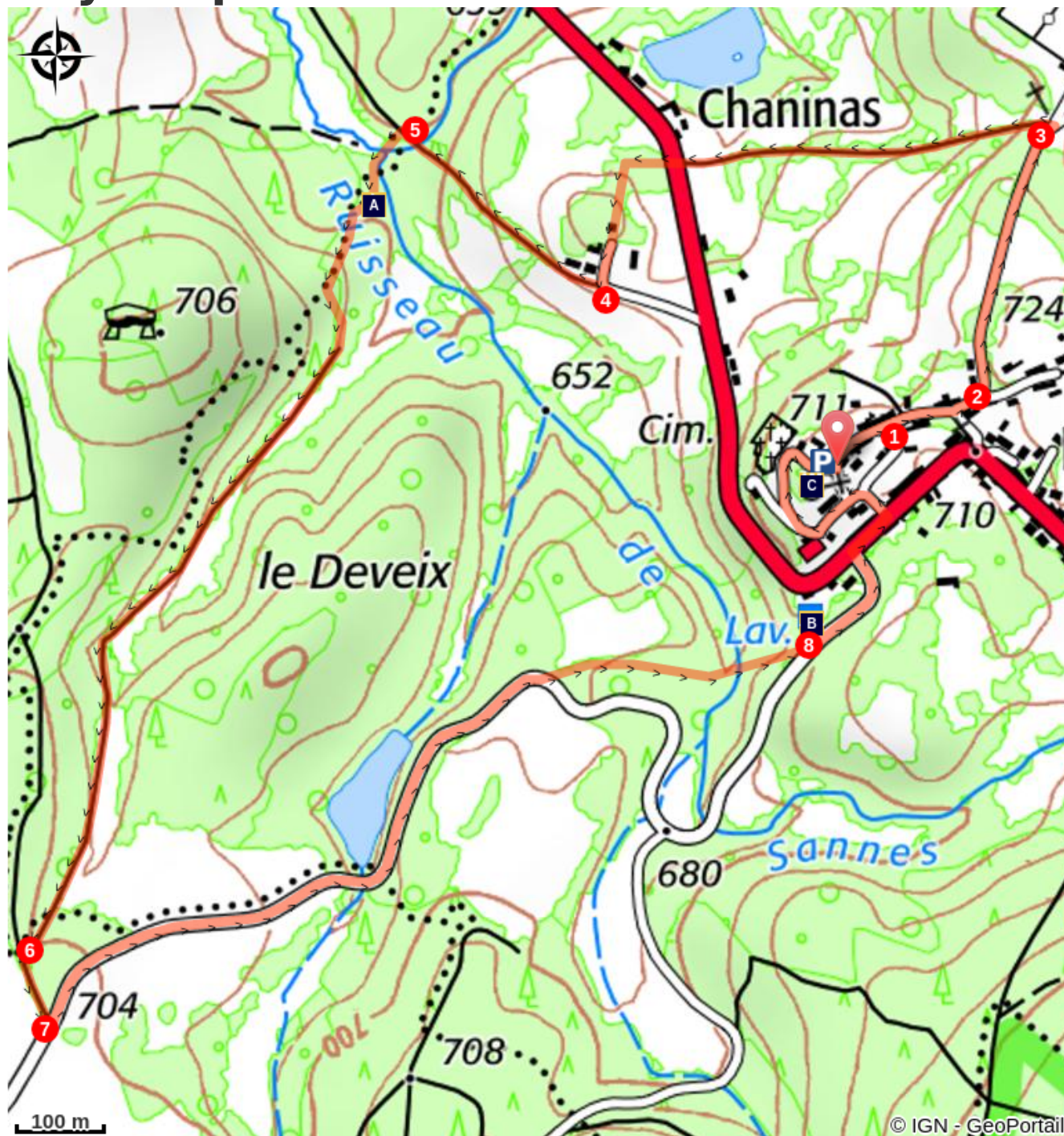
1. Turn left towards the village. Continue straight ahead.
2. At the 3rd intersection, turn left towards the stadium. Continue straight ahead for about 300 metres alongside the stone wall.
3. Turn left, the sunken path is lined with low walls. About 400 m further, cross the road D941 and follow the low, walled path opposite. At the intersection, at the top of it, go straight ahead. Pass below the shed and follow the tarmac road.
4. After the bread oven on the left, take the low path on the right and go straight on.
5. At the intersection, turn left towards the bridge. Stay on the uphill path.
6. After the climb, turn left at the junction. Follow the path to the road.
7. At the road, turn left.
8. After the lake, take the path on the left. At the crossroads, go straight on until you reach the D 28. Turn left, then take the D 941 to the right and take the steps leading to the Town Hall. After the Town Hall, turn left towards the church, take the path on the right going up and then the steps to reach the starting point.



Rando Millevaches
NATURE EN LIMOUSIN

05/31/2025 • The Painters' Walk •

On your path...



Panorama du bourg (A)



Laundry (B)



Church of Saint Radegonde (C)



Rando Millevaches
NATURE EN LIMOUSIN

05/31/2025 • The Painters' Walk •

All useful information

How to come ?

Access

From Crocq, take the D 996 towards St Bard then turn right onto the D 941 to reach La Villeneuve.

Advised parking

Place de l'église, La Villeneuve

Accessibility



VTT

Information desks

Communauté de communes Marche et Combrailles en Aquitaine

Rue de l'Etang, 23700 Auzances

Tel : 05 55 67 04 99



Rando Millevaches
NATURE EN LIMOUSIN

05/31/2025 • The Painters' Walk •

On your path...



Panorama du bourg (A)

Pierre Eugène Montezin (1874-1946), a painter influenced by Claude Monet, stayed in La Villeneuve where he painted several works including a canvas painted in 1925 depicting the village.

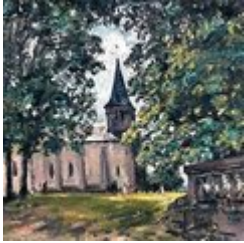
Attribution : Association pour la Conservation du Patrimoine de La Villeneuve



Laundry (B)

A testimony to rural life, the wash house or public laundry at La Villeneuve is fed by a spring that has the reputation of never freezing.

Attribution : Association pour la Conservation du Patrimoine de La Villeneuve



Church of Saint Radegonde (C)

This 19th-century church has some remarkable woodwork: Father Béluze, the parish priest, obtained it from the church of Saint-Amable in Riom, then under renovation. A curious painting representing a "Christ of the earthquakes" is also visible.

Attribution : Association pour la Conservation du Patrimoine de La Villeneuve



Rando Millevaches
NATURE EN LIMOUSIN

05/31/2025 • The Painters' Walk •