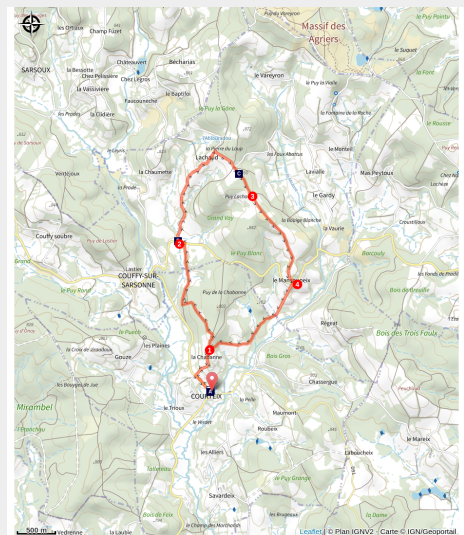


The Templars (shorter route 2)

Parc de Millevaches en Limousin - Courteix



(G.Salat - CC HCC)



Between meadows and forests, this is a country walk through varied landscapes.

The region was marked by the presence of the Templars (Templar tombs in the church at Courteix) and by the Seigneury of Châteauvert (medieval tomb in the church at Couffy). This route offers a succession of open views over the Plateau de Millevaches and the Monts d'Auvergne, passages through woodland undergrowth and the chance to go through typical Haute-Corrèze villages. There are two possible starting points, the church in Courteix or the town hall in Couffy-sur-Sarsonne, from which the main circuit can be reached, taking you on a round trip.

Useful information

Practice : Pedestrian

Duration : 2 h 30

Length : 8.8 km

Trek ascent : 219 m

Difficulty : Easy

Type : Loop

Themes : Heritage site and architecture, Landscape

Trek

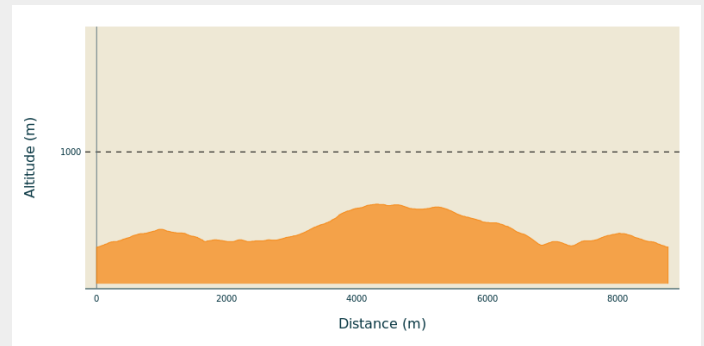
Departure : Parking on the church square, Courteix

Arrival : Parking on the church square, Courteix

Markings : — Yellow markers

Cities : 1. Courteix
2. Couffy-sur-Sarsonne

Altimetric profile



Min elevation 734 m Max elevation 855 m

Depart from the church in Courteix. Go up towards the D161 towards Couffy. At the next crossroads, turn right towards La Chabanne.

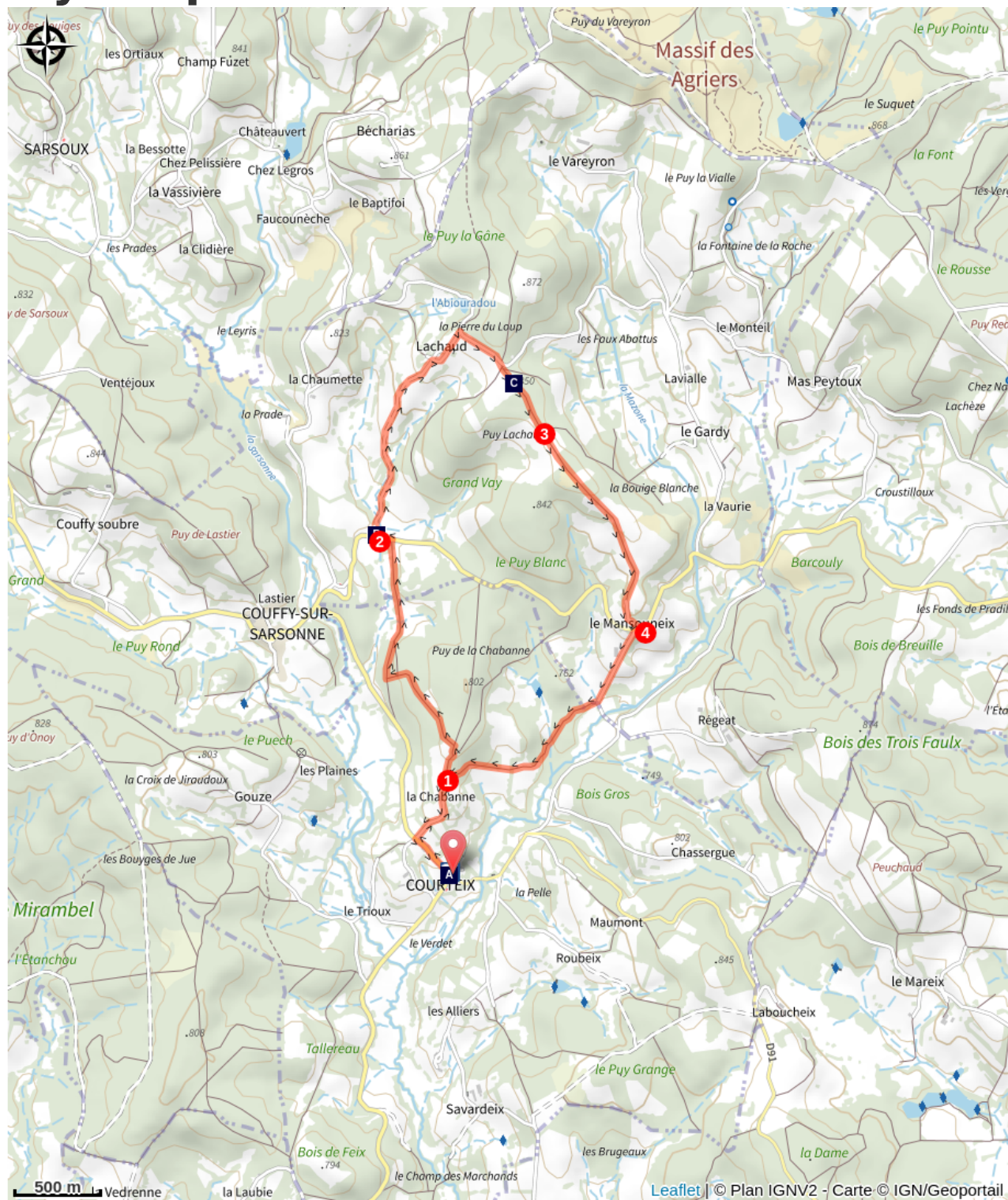
1. Go through the village. The road becomes a path. Ignore a path on your right. At the next two Y junctions, turn left. When you reach a beech forest, turn right to join the road and follow it to the left for 100 m.
2. Follow the track on the right that leads to Lachaud. In the village, take the road on the right. Turn right again at the rest area. Before a bend in the road, take the earth path straight ahead.
3. At a crossroads, take the track straight ahead (go left for the full track), which goes to Mansouneix.
4. Cross the departmental road and go down the small road. At the building before the river, turn left onto a path that you follow straight ahead to reach point 1. Turn left and go through La Chabanne. Turn left at the crossroads to get to Courteix.



Rando Millevaches
NATURE EN LIMOUSIN

06/01/2025 • The Templars (shorter route 2) •

On your path...



Courteix (A)



Wet meadows (B)



The Plateau of Millevaches (C)



Rando Millevaches
NATURE EN LIMOUSIN

06/01/2025 • The Templars (shorter route 2) •

All useful information

Advices

This path consists of a large circuit that you can join either at Courteix or at Couffy, making a round trip. This large loop circuit is the subject of a detailed sheet.

How to come ?

Access

The departure point is 14 km from Eygurande: follow the D21 headed towards Couffy, then the 161 towards Courteix.

Advised parking

Parking on the church square, Courteix

Information desks

Bureau d'information touristique d'Ussel

Rue Saint-Martin, 19200 Ussel

Tel : 05 19 60 00 30

<https://www.tourisme-hautecorreze.fr/>



Rando Millevaches
NATURE EN LIMOUSIN

06/01/2025 • The Templars (shorter route 2) •

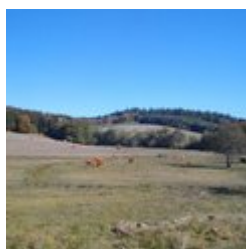
On your path...



Courteix (A)

Courteix church, built in the 12th and 13th centuries, was part of the Maltese Commandery of Bellechassagne. On the paved floor of the church, there are several gravestones of former monks of the Order of Malta. Outside, a fragment of the old cross marks the site of the former cemetery, which has been relocated.

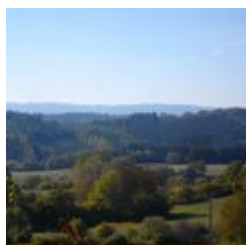
Attribution : G.Salat - CC HCC



Wet meadows (B)

Situated at the bottom of valleys, often in spring areas or on the bank of a stream that is barely flowing, wet meadows and peat bogs provide small reserves of fodder in times of drought. Livestock finds food there during very hot and dry weather events. In the spring, these areas are also good for dragonflies.

Attribution : G.Salat - CC HCC



The Plateau of Millevaches (C)

Culminating at an altitude of nearly 1,000 metres at Mont Bessou, the Millevaches plateau takes its name not from the number of cattle grazing on its green pastures but from the expression 'one thousand springs', as there is so much water.

Attribution : G.Salat - CC HCC



Rando Millevaches
NATURE EN LIMOUSIN

06/01/2025 • The Templars (shorter route 2) •