

Intriguing churches

Gorges et plateaux de la Haute-Dordogne



(V.Mendras - CC HCC)



A multi-faceted circuit, typical of the Haut-Corrèze landscape.

A hilly circuit that alternates between passages in the woods, beautiful forest tracks and roads with little traffic. Ideal for the start of the season. It is the shorter version of circuit 22, "Flora of the Chavanon".

Useful information

Practice : Mountain Bike

Duration : 3 h

Length : 22.8 km

Trek ascent : 458 m

Difficulty : Difficult

Type : Loop

Themes : Heritage site and architecture

Trek

Departure : Place, Saint-Exupéry

Arrival : Place, Saint-Exupéry

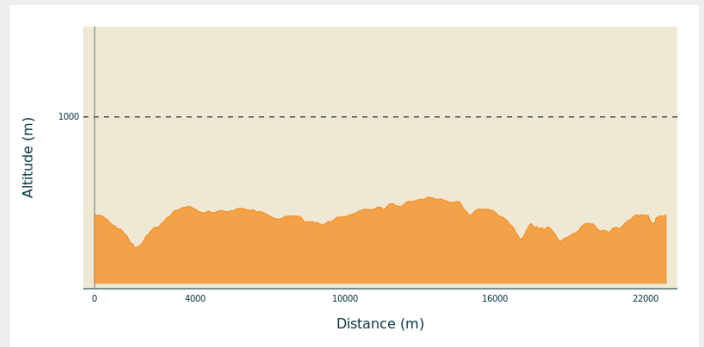
Markings : ➤ Brown mountain bike markers

Cities : 1. Saint-Exupéry-les-Roches

2. Saint-Étienne-aux-Clos

3. Saint-Fréjoux

Altimetric profile



Min elevation 637 m Max elevation 777 m

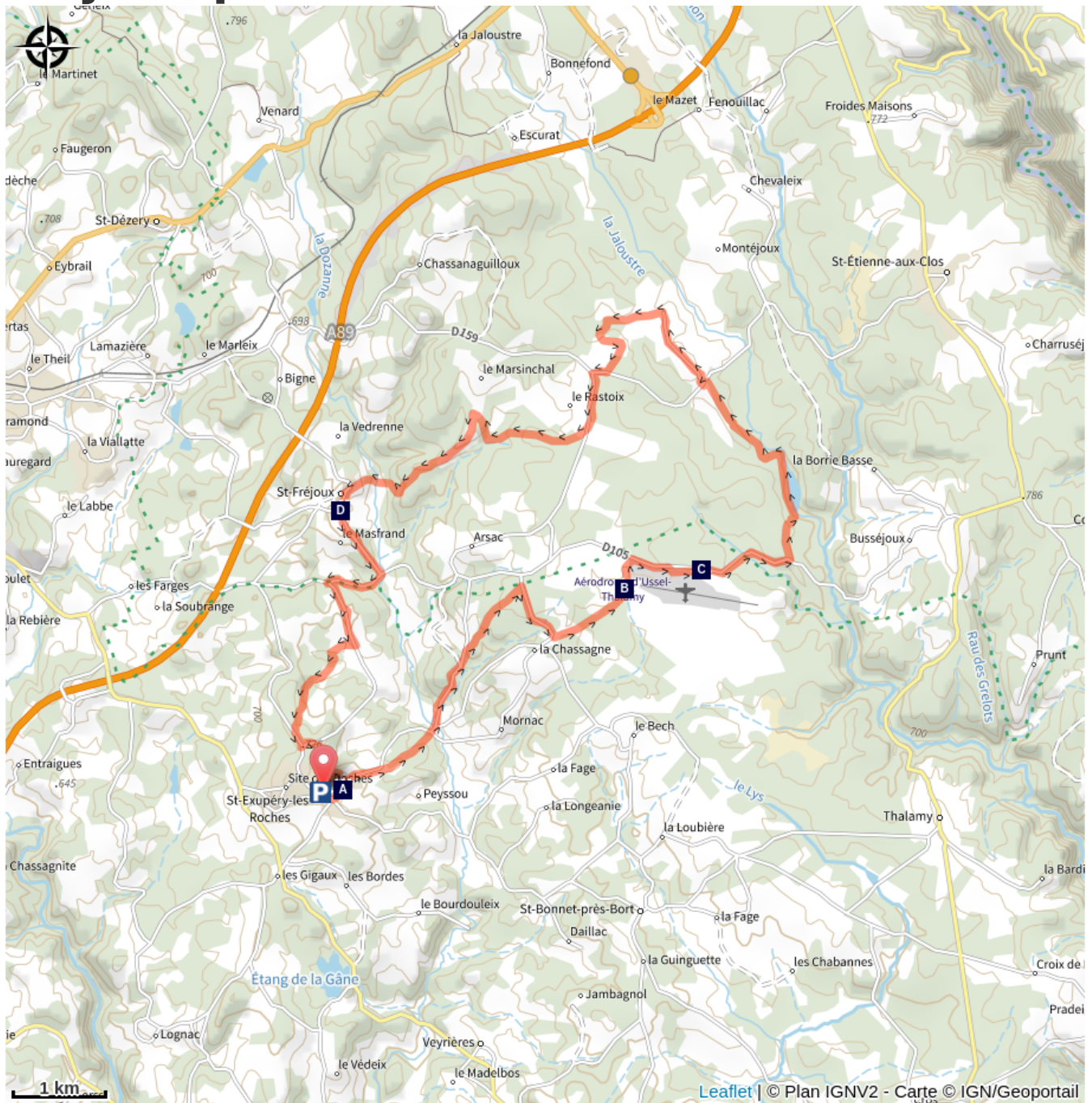
Marking: brown arrows, circuit number 21



Rando Millevaches
NATURE EN LIMOUSIN

12/13/2025 • Intriguing churches •

On your path...



The Church of St-Exupéry (A)



The Ussel-Thalamy airfield (C)



The village of St-Fréjoux (E)



The Massif du Sancy (B)



Vaury pond (D)



Rando Millevaches
NATURE EN LIMOUSIN

12/13/2025 • Intriguing churches •

All useful information

Advices

Please note, pedestrians have priority

How to come ?

Access

From Ussel, follow the D45 towards. Bort- St-Exupéry then the D138 to reach St-Exupéry

Advised parking

Place, Saint-Exupéry

Information desks

Bureau d'information touristique d'Ussel

Rue Saint-Martin, 19200 Ussel

Tel : 05 19 60 00 30

<https://www.tourisme-hautecorreze.fr/>



Rando Millevaches
NATURE EN LIMOUSIN

12/13/2025 • Intriguing churches •

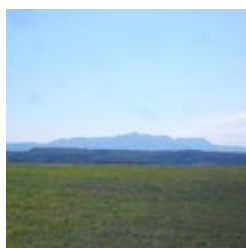
On your path...



The Church of St-Exupéry (A)

You will certainly find the style of St-Exupéry church surprising by contrast with the Romanesque churches of the Haute-Corrèze, characterised by a wall-belfry. Originally, the classical Romanesque church was part of a fortified enclosure with boundary walls from a property where a château, now destroyed, once stood. It was in poor condition, and certainly, as a reminder of the château's existence, two turrets and battlements were added during the restoration of the church, which was completed in 1880.

Attribution : G.Salat - CC HCC



The Massif du Sancy (B)

This circuit offers an amazing view of the highest volcano in France, the Puy de Sancy. Rising to an altitude of 1,885 metres, this summit is the highest point of the Massif Central. The two streams, the Dore and the Dogne originate here, and their confluence forms the Dordogne. On the way back from the tour, on the road to Ussel, the site of Les Roches also offers a stunning 360° panoramic view over the Monts d'Auvergne and the Montagne Limousine.

Attribution : V.Mendras - CC HCC



The Ussel-Thalamy airfield (C)

At an altitude of 740 metres, the Ussel platform is the first airfield created in Corrèze. The Ministry of War wanted to have a military field in Haute Corrèze, and the field was created in 1933 in the communes of Saint-Exupéry-les-Roches and Saint-Bonnet-près-Bort. It offers a 1,300 m tarmac runway and a 900 m grass runway.

Attribution : V.Mendras - CC HCC



Rando Millevaches
NATURE EN LIMOUSIN

12/13/2025 • Intriguing churches •



Vaury pond (D)

The Haute-Corrèze is often identified as the water tower of France because of the numerous rivers that have their sources there, and it is also rich in a multitude of ponds. They are all artificial and were created by people who often dammed up a stream at the end of a wetland, mainly for fishing.

Attribution : V.Mendras - CC HCC



The village of St-Fréjoux (E)

When you return from your trip, be sure to explore the village of St-Fréjoux, which is the pride of its 291 inhabitants at the last census. First of all, the St-Fréduphe church and its mysterious bulbous bell tower. A little further on, the cruck barn with its thatched roof. It is characterised by its cruck frame: the crossbeams, the main parts of the frame, start from the ground and also serve as a support for the walls of the building.

Attribution : G.Salat - CC HCC