

History along the water's edge

Parc de Millevaches en Limousin - Confolent-Port-Dieu



(M.Barreau - CC HCC)



History turned upside down by a dam...

Discover Confolent-Port-Dieu, built on a rocky outcrop at the confluence of the Dordogne and Chavanon rivers. From the source of the Bort-Les-Orgues dam to the last vestiges of Port-dieu, you will make your way through a preserved landscape where numerous brooks meander and deciduous and coniferous forests grow. A walk that is both physically challenging and cultural, you will walk through the Gorges of the Haute Dordogne as you discover the rich historical heritage of Confolent-Port-Dieu.

Useful information

Practice : Pedestrian

Duration : 4 h

Length : 13.5 km

Trek ascent : 581 m

Difficulty : Difficult

Type : Loop

Themes : Heritage site and architecture, Landscape

Trek

Departure : Bourg, Confolent-Port-Dieu

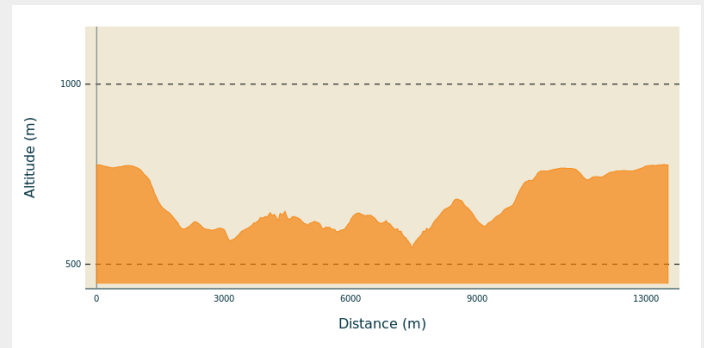
Arrival : Bourg, Confolent-Port-Dieu

Markings : — Yellow markers

Cities : 1. Confolent-Port-Dieu

2. Monestier-Port-Dieu

Altimetric profile



Min elevation 546 m Max elevation 777 m

Park in the village near the church. Go towards the town hall and then follow the D 159 towards Singles.

1. As you leave the village, turn right towards Confolent below for 50 m, then the forest track on the left. At the bend in the road, turn left down the trail. Cross the road and continue on the trail. Go right at the next two crossroads; the trail overlooks the Chavanon gorge.
2. Off the route: a 200 m return trip to the Arpiat bridge. Go up the road to the right for 600 m, and at the hairpin bend, take the forest track to the left. Follow it for 1.5 km.
3. Be careful: the path is not very visible: leave the track for a small trail on the right that winds upwards. It joins a path that you take on the left. Follow it for some time and join the road. Turn left onto it. At the crossroads with the path that leads to the church of St-Martin, go back as far as the Chapelle de la Manants: go down; at the barricade, turn left onto a trail that leads down to the chapel. Push on to the reservoir. Go up the road (on the left, you can make a round trip to the remains of the tower and the fountain).
4. Take the trail on the left that leads up to the church of St Martin. Continue past the church; the path passes in front of a spring and then follows the stream in the coombe: cross it and follow the markings carefully in this part because the trail is sometimes not very visible. Once you reach a clearing, cross the stream again; continue to the right: the trail continues to climb and joins a path that you take to the right to reach the village of Bourrière.
5. As you leave the village, take the path on the left. When you get to the wood, the track becomes a path and crosses a stream. Go back up to the road.
6. Cross it, and continue on the path opposite. Follow this road to the right to return to the starting point.



Rando Millevaches
NATURE EN LIMOUSIN

06/20/2025 • History along the water's edge •

On your path...



Bourg de Confolent Port Dieu (A)



The Chavanon valley (C)



The church of Saint Martin (E)



Le Sancy (B)



Bort Lake (D)



The Bourrière well (F)



Rando Millevaches
NATURE EN LIMOUSIN

06/20/2025 • History along the water's edge •

All useful information

Advices

Please note, the second part of the route is quite challenging.

How to come ?

Access

Coming from Ussel, follow the RD 1089 towards Clermont-Fd. Turn right onto the D27 and D159 towards Confolent-Port-Dieu

Advised parking

Bourg, Confolent-Port-Dieu

Information desks

Bureau d'information touristique d'Ussel

Rue Saint-Martin, 19200 Ussel

Tel : 05 19 60 00 30

<https://www.tourisme-hautecorreze.fr/>

Bureau d'information touristique de Bort-les-Orgues

287 Place Marmontel, 19110 Bort-les-

Orgues

Tel : 05 19 60 00 30

<https://www.tourisme-hautecorreze.fr/>



Rando Millevaches
NATURE EN LIMOUSIN

06/20/2025 • History along the water's edge •

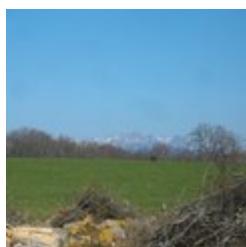
On your path...



Bourg de Confolent Port Dieu (A)

Confolent-Port-Dieu is a recent commune. In fact, the village of Port-Dieu, which gave its name to the first commune, was swallowed up in 1951 by the waters of the Bort-les-Orgues dam. The hamlet of Confolent, built on the heights and thus saved from the waters, was consequently established as a town and took the name of Confolent-Port-Dieu. And so, when the dam was impounded, a new commune was born. A church and a town hall were then built by EDF in the centre of the new village. This contemporary church is now the parish church. However, Confolent-Port-Dieu has two other religious buildings that bear witness to a rich medieval past.

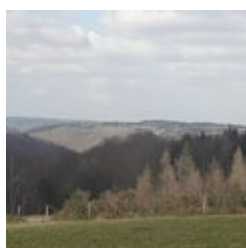
Attribution : G.Salat - CC HCC



Le Sancy (B)

This hike will offer you several viewpoints overlooking the highest volcano in mainland France, the Puy de Sancy. At 1885 metres above sea level, this summit is the highest point of the Massif Central. The two streams, the Dore and the Dogne, originate there, and their confluence forms the Dordogne.

Attribution : G.Salat - CC HCC



The Chavanon valley (C)

A natural boundary between the Corrèze and the Puy de Dôme, the Chavanon is born from the confluence of two streams, the Ramade and the Méouzette.

It continues its course through gorges then flows into the Dordogne, upstream of the Bort-les-Orgues dam reservoir. Classified Natura 2000 along its entire course, it is a river famous for its trout.

Attribution : G.Salat - CC HCC



Rando Millevaches
NATURE EN LIMOUSIN

06/20/2025 • History along the water's edge •



Bort Lake (D)

The Bort-les-Orgues lake is an artificial lake of 10.72 km² and results from the creation of the Bort-les-Orgues dam on the high course of the Dordogne. It marks the point where the river enters its gorges and is the first upstream hydroelectric development on the Dordogne.

The lake is 21 km long and is shared between the departments of Corrèze, Cantal and Puy-de-Dôme. Although there is no walking tour of the lake yet, a nature-sports festival takes place every year around 14 July, the Aquaterra, which includes trail and water sports.

Attribution : G.Salat - CC HCC



The church of Saint Martin (E)

Before the priory of Port-Dieu was founded, the parish church was that of Saint Martin. Built on the plateau at an altitude of 690 metres, the church of Saint Martin is today isolated next to a farm that has not been in use since 1920. In any case, Saint Martin is the original cradle of the parish.

Attribution : G.Salat - CC HCC



The Bourrière well (F)

The villages of Haute-Corrèze have all been involved in agriculture. Passing through these hamlets always provides a few unique discoveries during a hike: barns, manor houses, crosses, bread ovens... You have already come across several fountains from Port-Dieu. Don't miss the well and the bread oven in Bourrière.

Attribution : G.Salat - CC HCC



Rando Millevaches
NATURE EN LIMOUSIN

06/20/2025 • History along the water's edge •